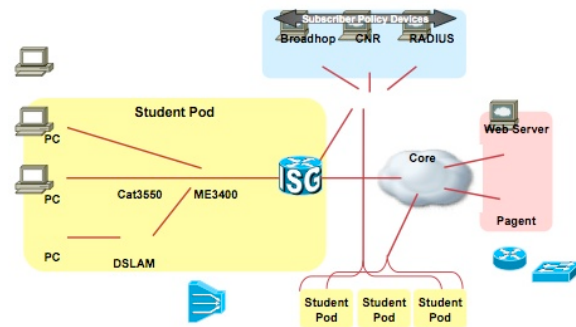


Length: 4-day Workshop

This course is for customer technicians, system integrators, and system engineers who need to implement the Intelligent Service Gateway (ISG) on Cisco® routers. The course focuses on understanding the ISG features and functions, a structured approach to configuring ISG, and useful verification commands. The course includes hands-on exercises that aid in configuring and verifying ISG and understanding ISG operation using a remote lab.



You will learn to:

Upon completion of this course, you should be able to:

- Describe the primary subscriber management functions that ISG provides on Cisco routers
- Identify the policy layer devices that ISG uses to control subscriber functions
- Configure the northbound interfaces that it uses to communicate with policy layer devices
- List, describe, and configure the dynamic session initiation methods
- Configure subscriber access for Layer 2 connected IP sessions, routed IP sessions, interface sessions, and Point-to-Point Protocol (PPP) sessions
- Configure and explain the operation of subscriber authentication for IP sessions using transparent auto logon (TAL), IP sessions using RADIUS proxy, Web logon, PPP sessions using Challenge Handshake Protocol (CHAP), and PPP session using TAL

Recommended for:

This course is for technical professionals who need to implement the Intelligent Service Gateway on Cisco routers. The following are considered the primary audience for this course:

- Customer technical support personnel
- System engineers
- System integrators

Prerequisites:

Following are the prerequisites for this course.

- Interconnecting Cisco Network Devices (ICND)
- Implementing Cisco Quality of Service (QOS)
- Understanding of AAA and RADIUS concepts and configuration
- Working knowledge of broadband PPP access technologies (BBAGG)